

PROCEDURE FOR CORRECTION OR MODELING OF THE SILICONE GRAFT BY THE SURGEON

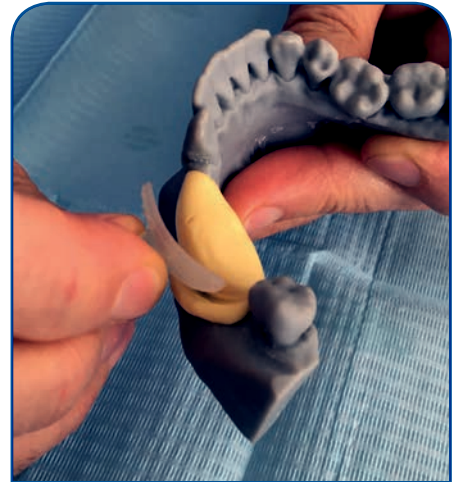
IMPERATIVE USE OF TEMPLATES



PREPARE THE SILICONE PUTTY



APPLY THE TEMPLATE



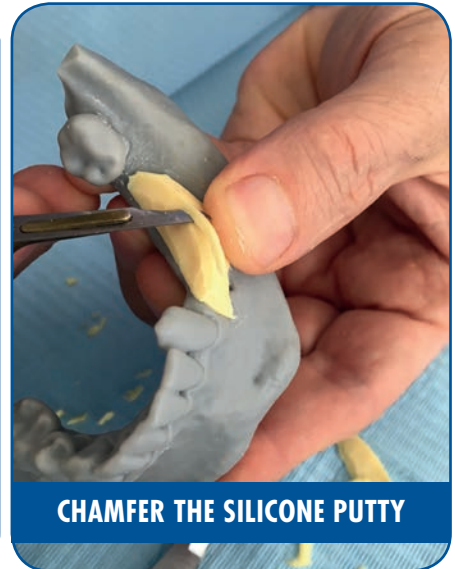
ADJUST THE THICKNESS



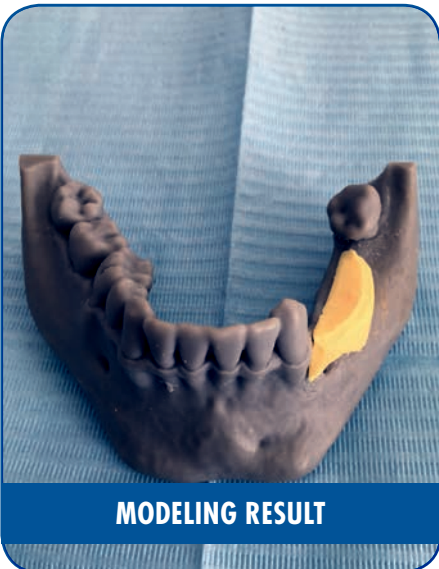
LEVEL OFF THE EXCESS ON OCCLUSAL FACE



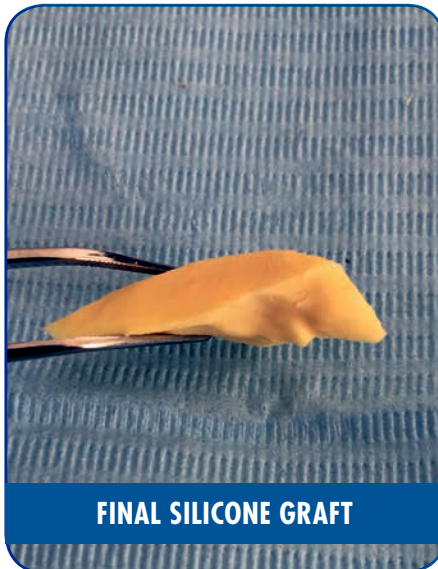
ADJUST THE EDGES



CHAMFER THE SILICONE PUTTY



MODELING RESULT



FINAL SILICONE GRAFT



 **BIOBank**